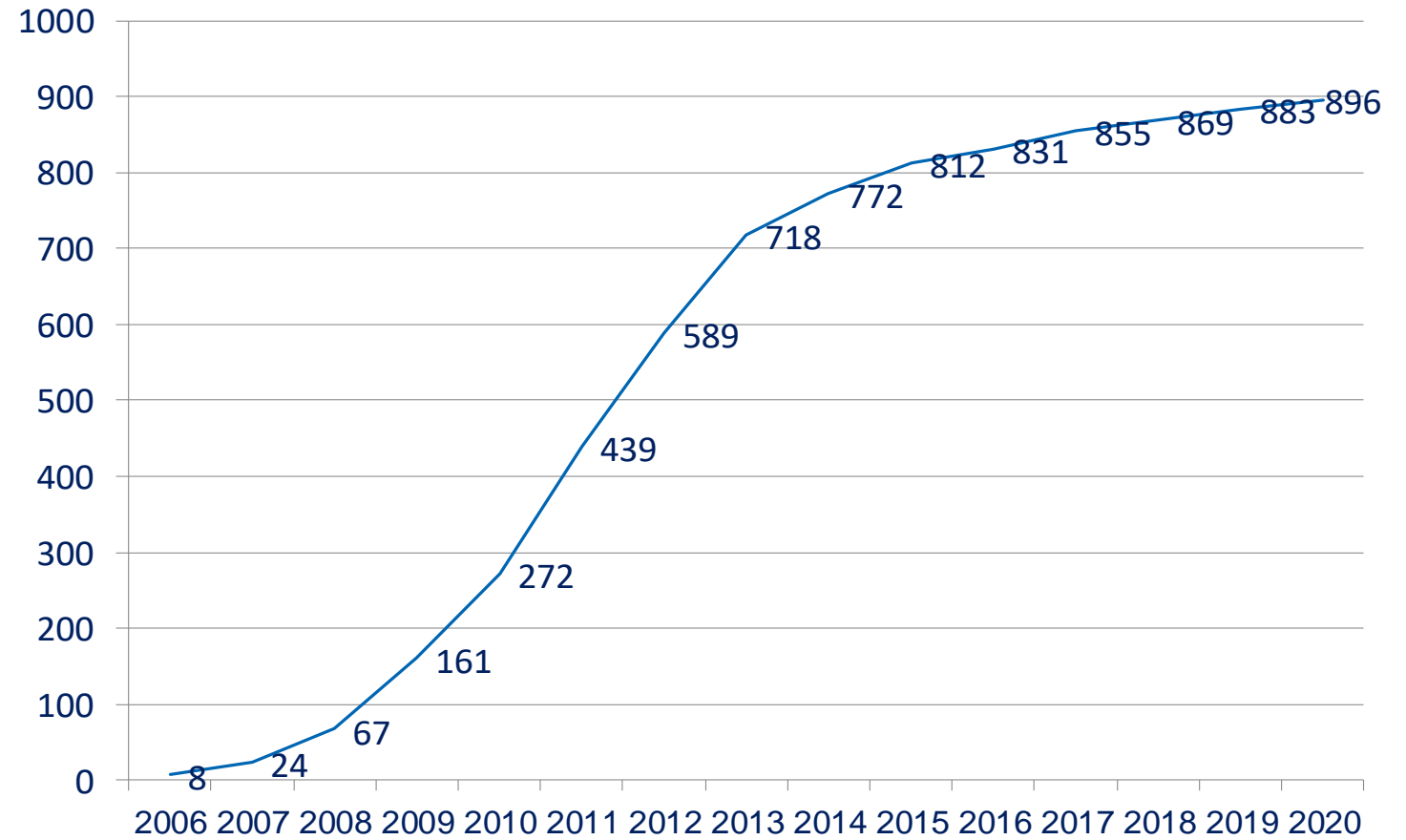




Energy Cooperatives in Germany

State of the Sector 2021 Report

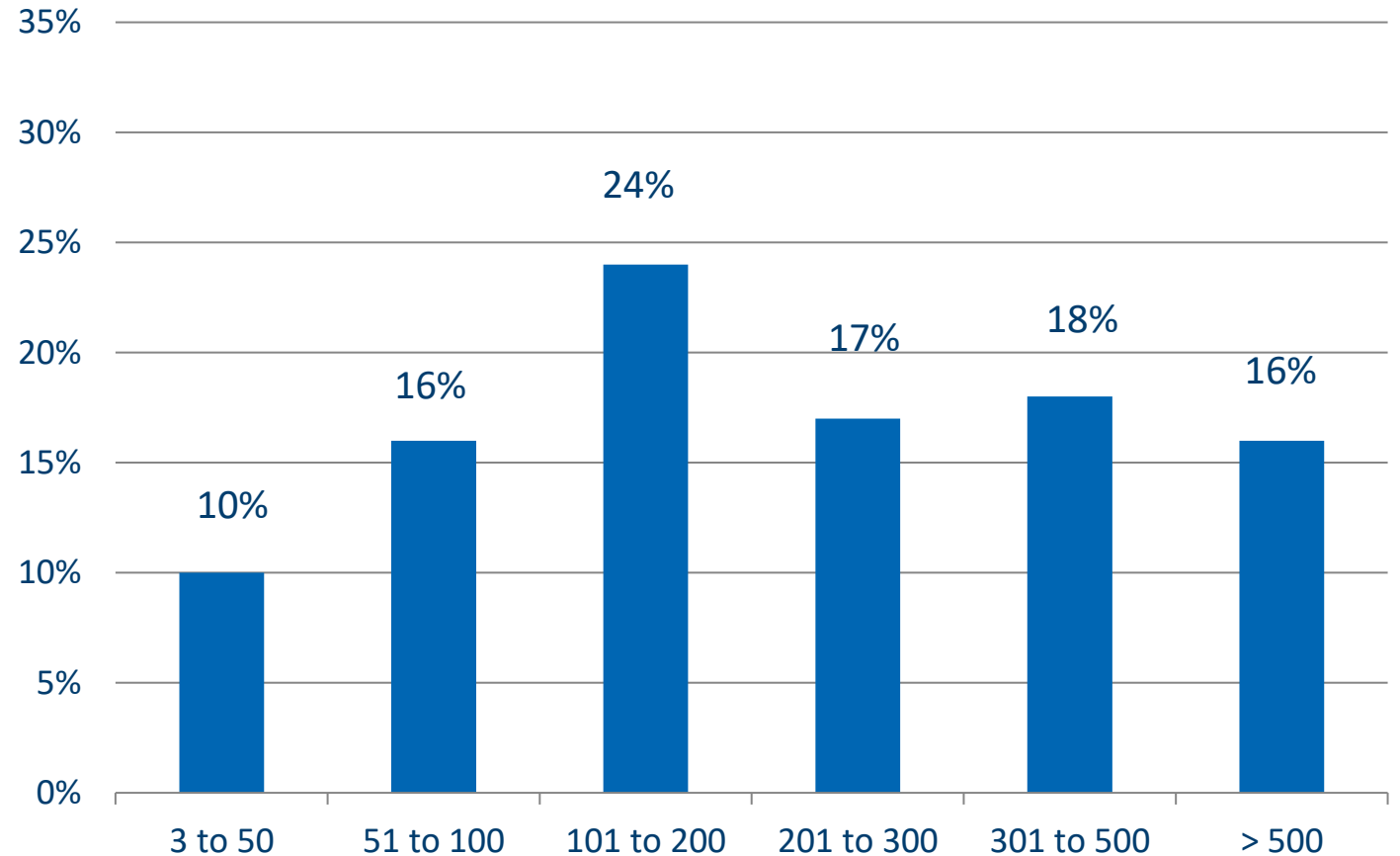
Foundations of Energy Cooperatives since 2006 (cumulated)



Members at the time of the survey

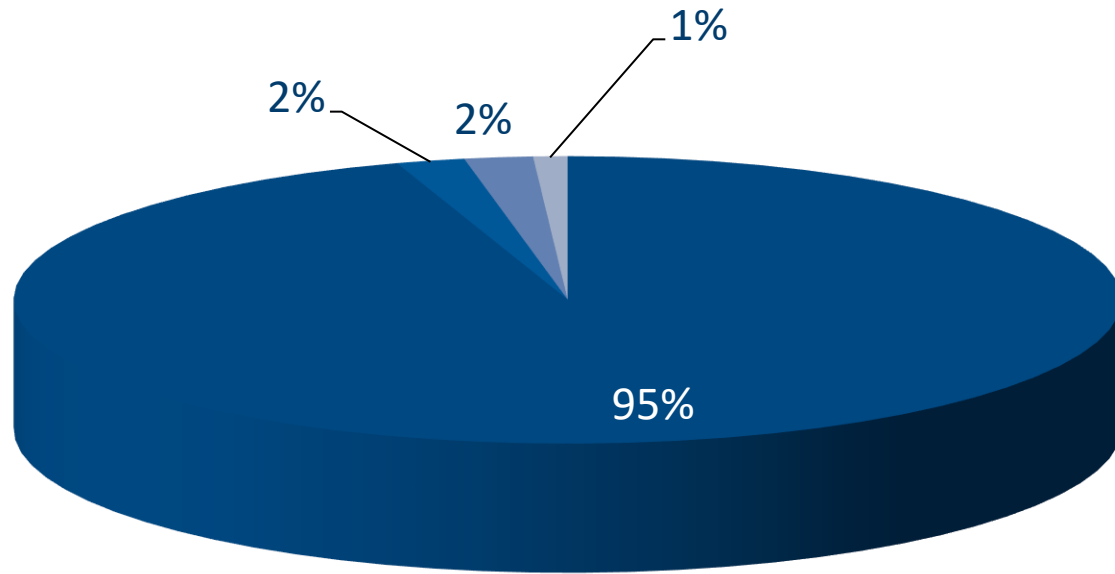


Average: 292 members



Membership structure

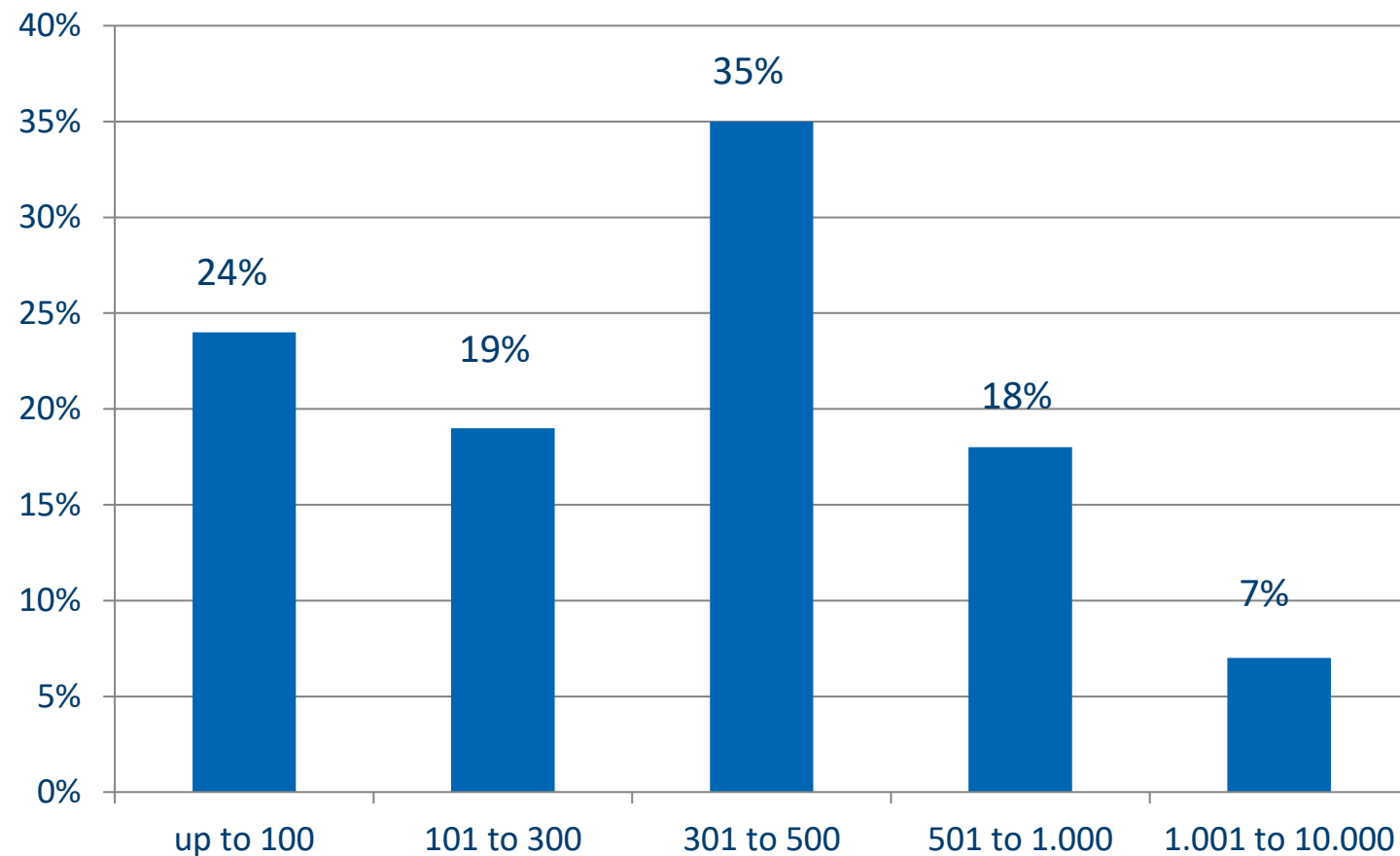
- ☐ Individuals
- ☐ Companies / Banks
- ☐ Farmers
- ☐ Municipalities /
Public institutions/
Churches



Distribution of minimum participations (in €)



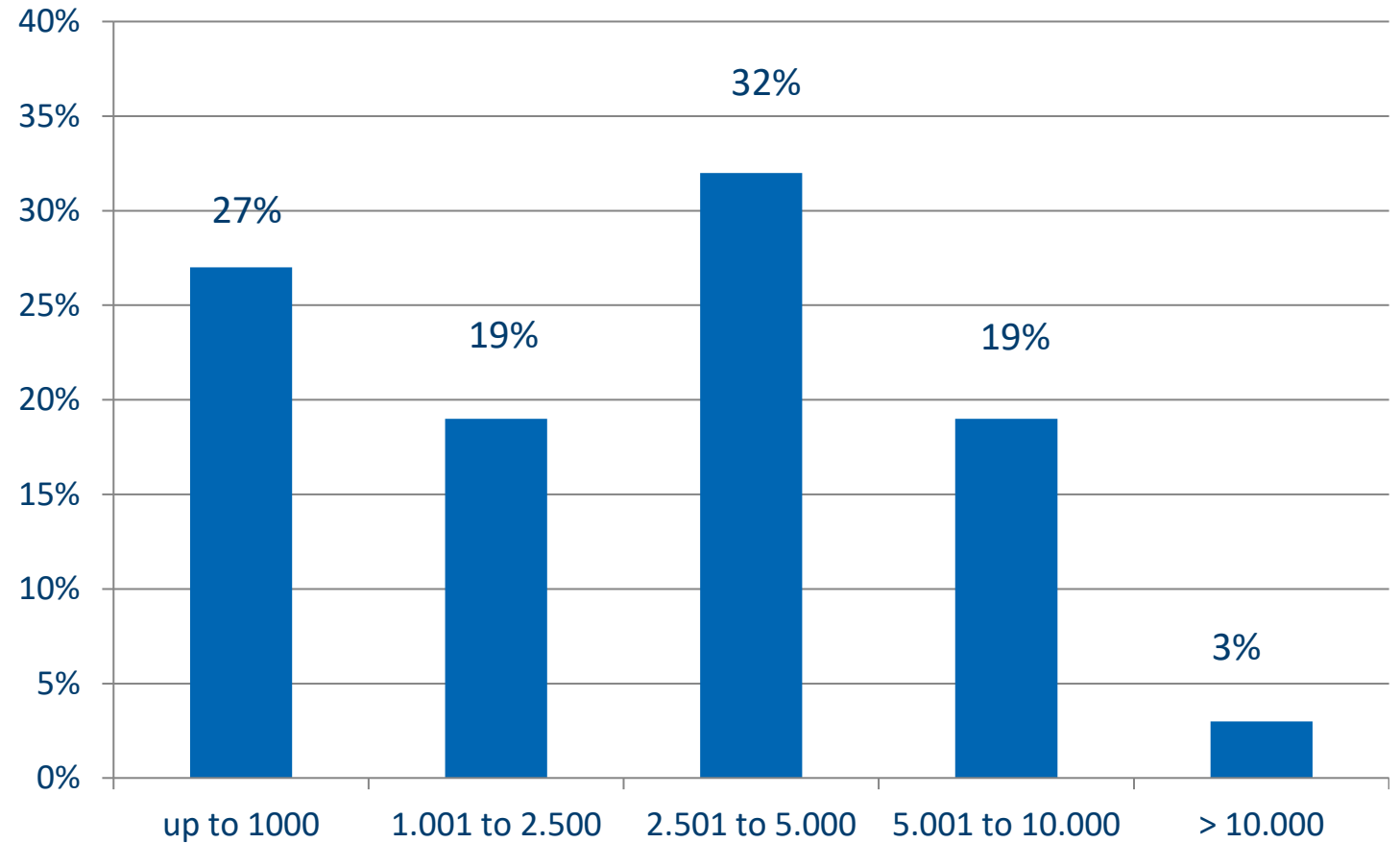
Average: 560 Euro



Participation per member (in €)



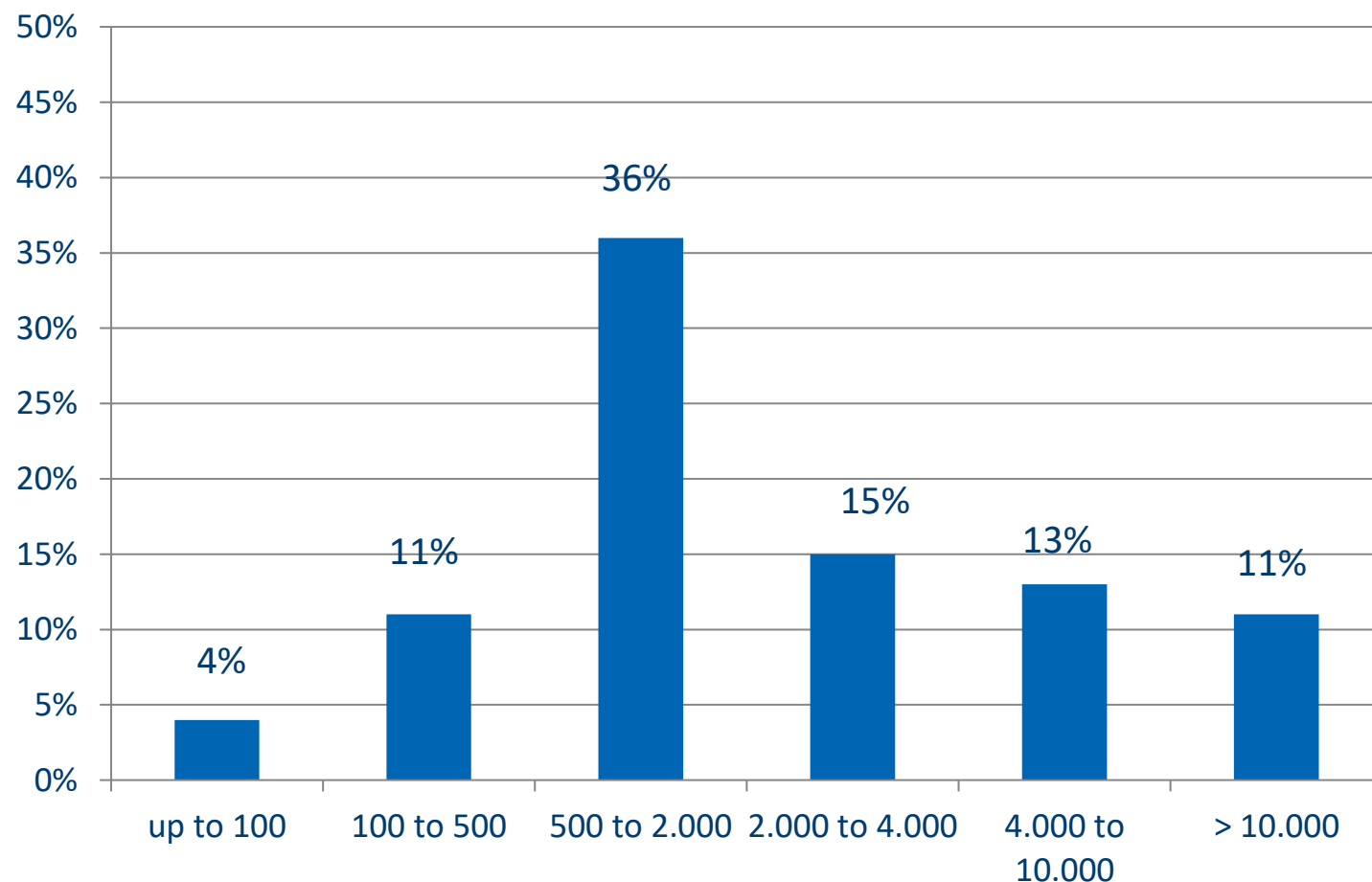
Average: 5,146 Euro



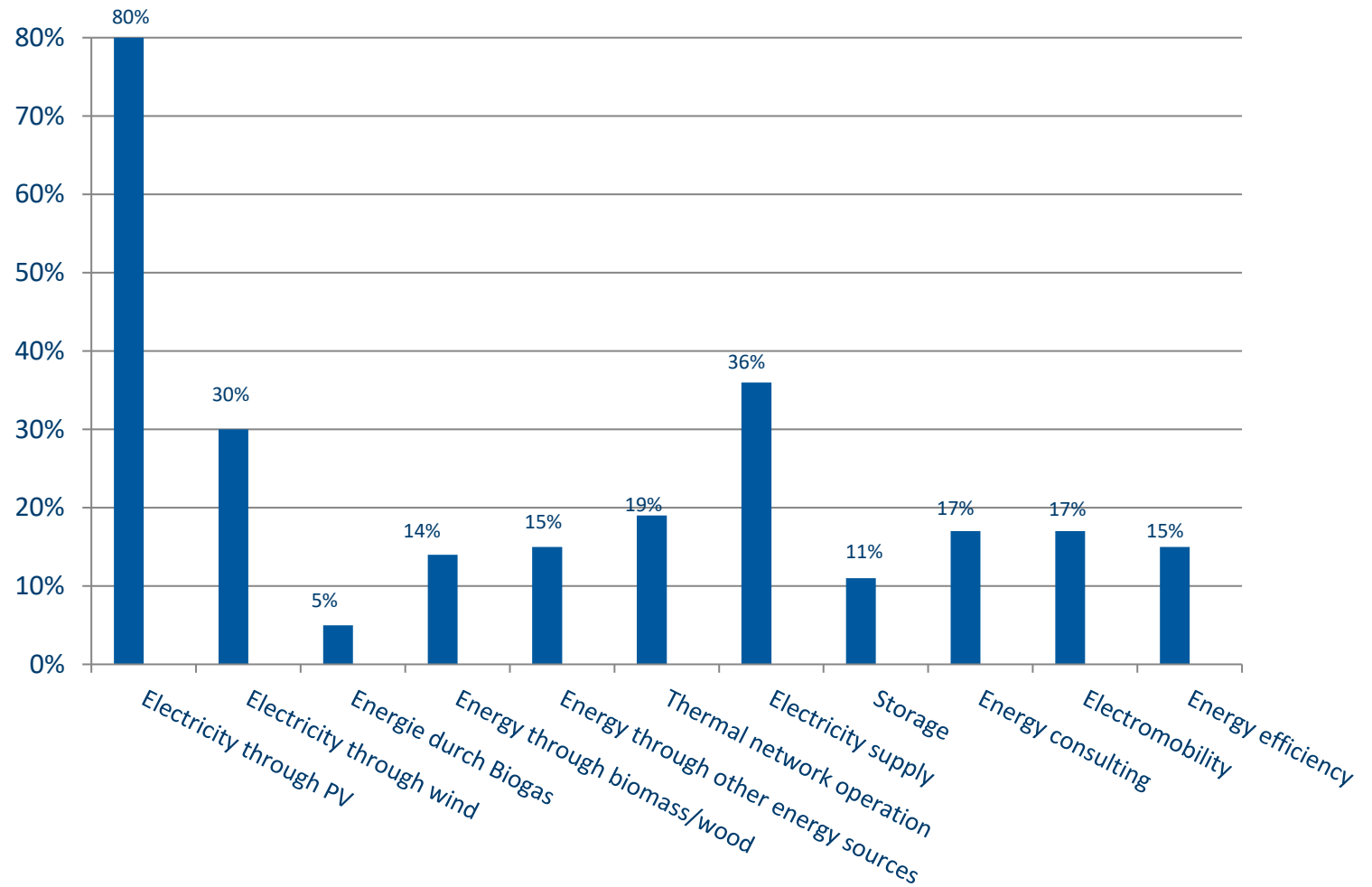
Distribution of total investments (Energy Cooperatives) in €k



Average:
3,816,475 Euro

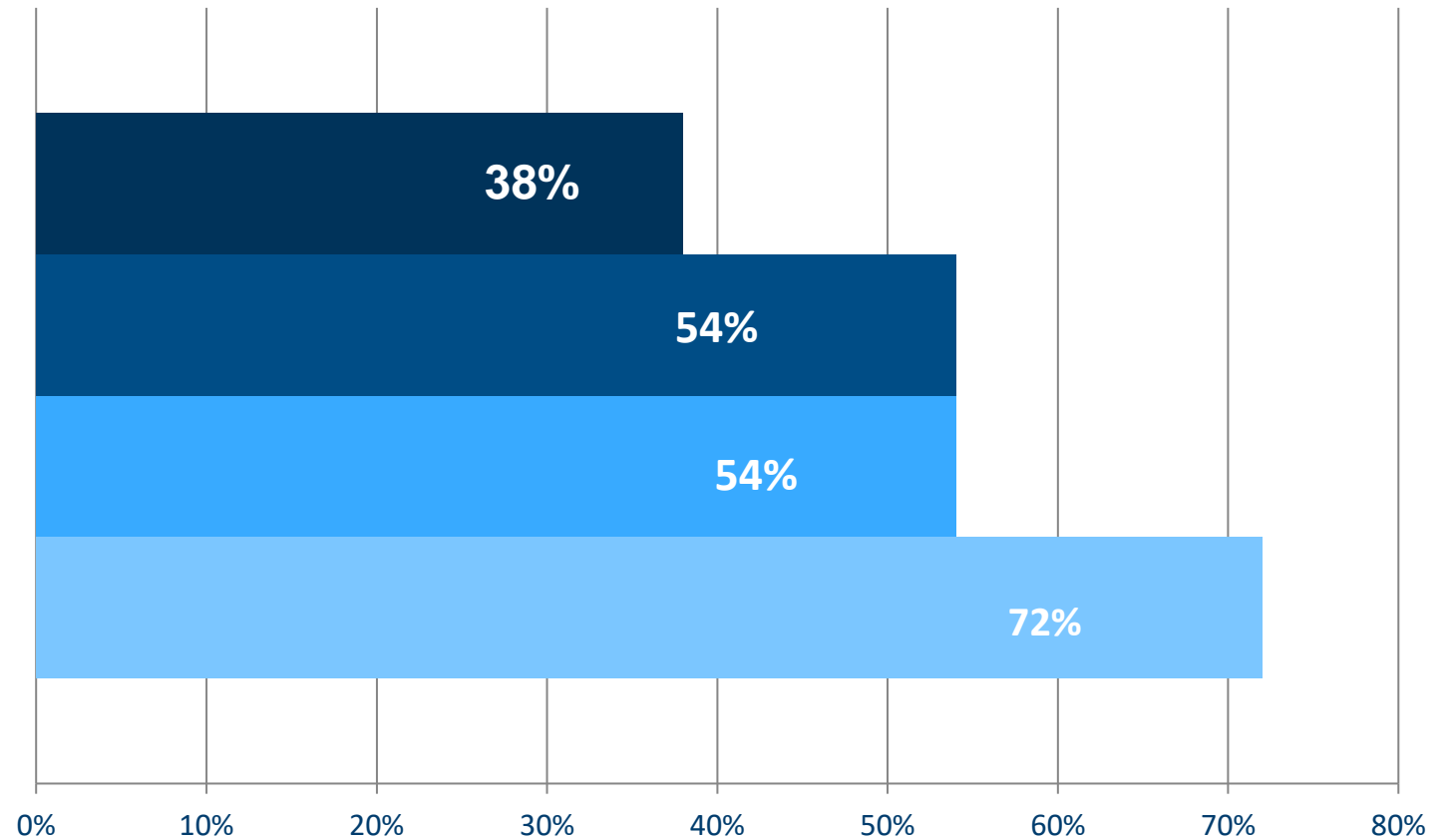
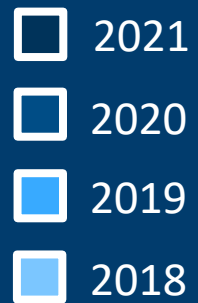


In which areas is your cooperative already active?



Solar energy: Poor outlook

Cooperative plans for new solar installations:



**896 Renewable Energy
Cooperatives founded
after 2006 with...**



200.000 members



3,2 billion euros

investments in renewable
energies



3 million tons

of CO2-emissions prevented in 2020



8,8 Twh

community-owned electricity generation in 2020



3,5 %

share of the total renewable electricity generation in Germany

Total figures for
Germany
(31.12.2020)